

# StaticStop™

by  
SelecTech

THE STATIC CONTROL FLOORING EXPERTS™

FreeStyle ESD and SelecTile ESD Interlocking ESD Tile  
CVT Glue Down Vinyl  
EpoxyStyle Epoxy Floor Coating  
OhmStyle ESD Carpet  
LowVolt Rubber Tiles  
ESD Floor Care Products

ANSI ESD S20.20 COMPLIANT



---

**UNPARALLELED STATIC CONTROL FLOORING SOLUTIONS  
FOR ALL STATIC-SENSITIVE AREAS**

---

[www.StaticStop.com](http://www.StaticStop.com)

# FreeStyle™ ESD

## Interlocking Static Control Floor Tiles

**FreeStyle™ ESD** is the **WORLD'S FIRST** and **ONLY** Free-Floating, Static Control Flooring System Utilizing a Patented “Hidden Zipper-Lock” Connection



### Interlocking Tabs Make Installation A Snap:

**FreeStyle™ ESD** manufactured by StaticStop.com (“the ESD Flooring Experts”) is available in static dissipative or conductive Meg-Ohm ratings and is easy to install with no need for conductive adhesives.

- ✓ No Adhesive Required
- ✓ Interlocks Provide Tile-to-Tile Electrical Connection
- ✓ Install over Existing Floors
- ✓ Eliminate Downtime

### Also Available as a Glue Down Tile.





## Warranty

**FreeStyle™ ESD** is a durable floor covering and is backed by a **Lifetime Electrical** and 10 year limited wear warranty. Ask your **FreeStyle™ ESD** dealer for more details on our warranties.

## Installation-Interlocking

**FreeStyle™ ESD** is a 18.5" x 18.5" (2.38 sq. ft./tile) interlocking floor tile. A plastic deadhead hammer should be used for joining these products. Tiles can be cut using a vinyl-tile cutter, circular saw, jig saw, or other power saws. **FreeStyle™ ESD** is a free-lay system and does not require the use of adhesives. **FreeStyle™ ESD** may be installed over concrete, wood, rubber, vinyl, composite tiles, and other standard floors. A 3/8" gap should be left around the perimeter and along any other vertical surface. The floor must be grounded properly to ensure proper discharge of static charges. For more detailed instructions, consult the **FreeStyle™ ESD** Installation Guide.

## Installation-Gluedown

The 2 millimeter top surface of **FreeStyle™ ESD** is also available as a glue down product using a conductive adhesive. For glue down installations, the surface must be properly prepared and free of moisture, dirt, oils, and other foreign materials to ensure a reliable bond with the adhesive. For more detailed instructions, consult the **FreeStyle™ CVT** Installation Guide.

## Regular Maintenance

**FreeStyle™ ESD** is easy to clean and maintain. The tiles should be cleaned with an ESD cleaner. We recommend our **ProtectOhm** cleaner for best results. The tiles can be cleaned by hand using a mop or sponge. A power scrubber or buffer can also be used to clean particularly tough stains and soiling. Walk-behind auto-scrubbers can also be used in larger applications.

## Architectural Specifications

All floors shown in the Finish Schedule or listed in this specification shall be **FreeStyle™ ESD** Resilient Flooring, manufactured by SelecTech, Inc. Avon, MA. The product should have an electrical resistance of between  $2.5 \times 10^4$  and  $10^6$  Ohms for conductive flooring applications and  $10^6$  to  $10^9$  Ohms for static dissipative applications as measured pursuant to ANSI/ESD 7.1. The product shall be an interlocking floor tile and be available in 18.5" x 18.5" squares (nominal). This product shall offer a lifetime electrical and 10 year limited wear warranty as detailed in the **FreeStyle™ ESD** Warranty brochure. The tiles shall be installed as a free-lay product without adhesives. Installation shall be as recommended in the **FreeStyle™ ESD** Installation Guide.

## Solvent/Stain Resistance

**FreeStyle™ ESD** has been tested for solvent/stain resistance per ASTM F-925-96 against a number of fluids, such as oils, acids, solvents, and staining agents.

## Physical Properties

<b>Dimensions</b>	18.5" x 18.5"
<b>Thickness of Interlocking</b>	FS2: 0.375", FS4: 0.34"
<b>Effective Coverage</b>	2.38 square feet per tile
<b>Weight of Interlocking</b>	FS2: 6.5 lbs; FS4: 5.4 lbs
<b>Reference Specification</b> ASTM F-1700	Conforms
<b>Critical Radiant Flux</b> ASTM E-648	> 1.0 W/cm <sup>2</sup> Meets Class I Fire Rating
<b>Smoke Density</b> ASTM E-662	≤ 450
<b>Chemical Resistance</b> ASTM F-925	Excellent resistance to Acids, Alkalis, Household Chemicals
<b>Recycled Content</b> (Interlocking Tile Only)	Minimum 20% Post-Industrial Materials
<b>Weight of Glue-Down</b>	1.95 lbs
<b>Thickness of Glue-Down</b>	2 mm

## Electrical Properties

	<b>FreeStyle CONDUCTIVE**</b>	<b>FreeStyle DISSIPATIVE</b>
<b>Electrical Resistance</b> ESD S7.1 at 15% RH	$2.5 \times 10^4$ to $10^6$ Ohms	$10^6$ to $1.0 \times 10^9$ Ohms
<b>Electrostatic Propensity*</b> ESD STM 97.2 at 15% RH AATCC-134 at 15% RH	<10 volts	<30 volts
<b>Static Decay Method 4046</b> at 15% RH	<0.01 seconds	<0.02 seconds

**ESD S20.20:** Complies

**Grounding:** Concrete Floor: Every 1000 Sq. Ft.  
Access Floor: Every 3000 Sq. Ft.

\*All conductive flooring (regardless of composition or manufacturer) requires appropriate conductive footwear to achieve results in this range.

### For more information contact:

StaticStop (a division of SelecTech, Inc.)

33 Wales Ave, Unit F, Avon, MA. 02322

Phone: (877) 738-4537

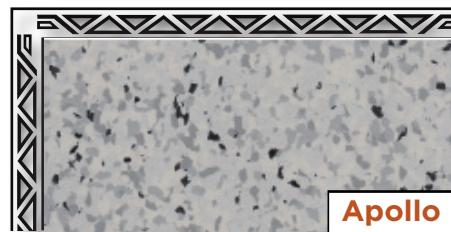
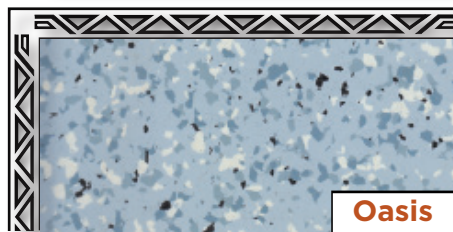
E-mail: [info@staticstop.com](mailto:info@staticstop.com)

Visit our ESD website at [www.StaticStop.com](http://www.StaticStop.com)

## FreeStyle ESD PLUS™

### Static Control Floor Tiles

**FreeStyle ESD PLUS™** is a Free-Floating ESD Flooring System With a Patented Hidden Interlock PLUS a Polyurethane Finish for Exceptionally Easy Maintenance



**Don't see a color you like? Ask about our extensive custom color options.**

Also available as a glue-down sheet.

### Interlocking Tabs Make Installation A Snap:

**FreeStyle ESD PLUS™** manufactured by **StaticStop.com** ("the ESD Flooring Experts") is available in static dissipative or conductive Meg-Ohm ratings and is easy to install without the need for conductive adhesives or copper foil. **FreeStyle ESD PLUS™** has a state of the art polyurethane finish that provides best in class maintainability.

- ✓ No Adhesive or Copper Foil Required
- ✓ Interlocks Provide Tile-to-Tile Electrical Connection
- ✓ Install over Existing Floors
- ✓ Eliminate Downtime
- ✓ Polyurethane / Ceramic Finish for easy maintenance





## Warranty

**FreeStyle ESD PLUS™** is manufactured to provide a durable and long-lasting floor covering under a range of temperature and exposure conditions and is backed by a **Lifetime Electrical** and a 10-Year limited warranty against wear. See our FreeStyle ESD Warranty for more detailed information.

## Installation-Interlocking

**FreeStyle ESD PLUS™** is a 18.5" square (2.38 sq. ft./tile) interlocking floor tile. A plastic deadhead hammer should be used for joining these products. Tiles can be cut using a vinyl-tile cutter, circular saw, jig saw, or other power saws. **FreeStyle ESD PLUS™** is a free-lay system and does not require the use of adhesives.

**FreeStyle ESD PLUS™** may be installed over concrete, wood, asbestos tile, rubber, vinyl, composite tiles, and other standard floors. A 3/8" gap around the perimeter and along any other vertical surface should be left to allow for expansion and contraction. The floor must be grounded properly to ensure proper discharge of static charges. For more detailed instructions, consult the **FreeStyle ESD PLUS™** Installation Guide.

## Regular Maintenance

**FreeStyle ESD PLUS™** is easy to clean and maintain. The tiles should be cleaned with an ESD cleaner. We recommend our **ProtectOhm** cleaner for best results. The tiles can be cleaned by hand using a mop or sponge. A power scrubber or buffer can also be used to clean particularly tough stains and soiling.

## Installation-Gluedown

**FreeStyle ESD PLUS™** is also available in top-sheet-only for direct glue down using a conductive adhesive. For glue down installation, the surface must be properly prepared and free of moisture, dirt, oils, and other foreign materials to ensure a reliable bond with the adhesive. For specific and detailed instructions, please see our installation guidelines.

## Solvent/Stain Resistance

**FreeStyle ESD PLUS™** has been tested for solvent/stain resistance per ASTM F-925-96 against a number of fluids, such as oils, acids, solvents, and staining agent.

### Physical Properties

<b>Dimensions</b>	18.5" x 18.5"
<b>Thickness of Interlocking</b>	FS2: 0.375", FS4: 0.34"
<b>Thickness of Glue Down</b>	2 mm
<b>Effective Coverage</b>	2.38 square feet per tile
<b>Weight of Interlocking</b>	FS2: 6.5 lbs; FS4: 5.4 lbs
<b>Weight of Glue Down</b>	1.4 lbs
<b>Reference Specification ASTM F-1700</b>	Conforms
<b>Critical Radiant Flux ASTM E-648</b>	> 1.0 W/cm <sup>2</sup> Meets Class I Fire Rating
<b>Smoke Density ASTM E-662</b>	≤ 450
<b>Chemical Resistance ASTM F-925</b>	Excellent resistance to Acids, Alkalis, Household Chemicals
<b>Recycled Content (Interlocking Tile Only)</b>	Minimum 20% Post-Industrial Materials

### Electrical Properties

	<b>FreeStyle CONDUCTIVE**</b>	<b>FreeStyle DISSIPATIVE</b>
<b>Electrical Resistance</b> ESD S7.1 at 15% RH	2.5 x 10 <sup>4</sup> to 10 <sup>6</sup> Ohms	10 <sup>6</sup> to 1.0 x 10 <sup>9</sup> Ohms
<b>Electrostatic Propensity*</b> ESD STM 97.2 at 15% RH AATCC-134 at 15% RH	<10 volts	<30 volts
<b>Static Decay Method 4046</b> at 15% RH	<0.01 seconds	<0.02 seconds
<b>Grounding</b>	Concrete Floor Access Floor	Every 1000 Sq. Ft. Every 3000 Sq. Ft.

**ESD S20.20:** Complies

\*All conductive flooring (regardless of composition or manufacturer) requires appropriate conductive footwear to achieve results in this range.

\*\*Glue down tile is available in conductive ratings only.

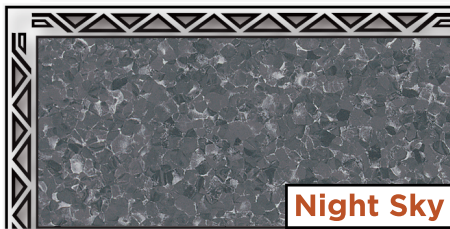
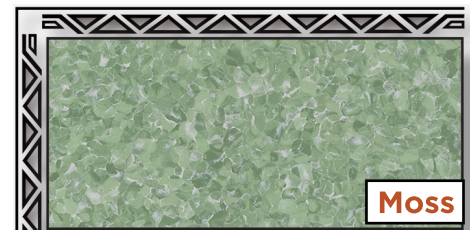
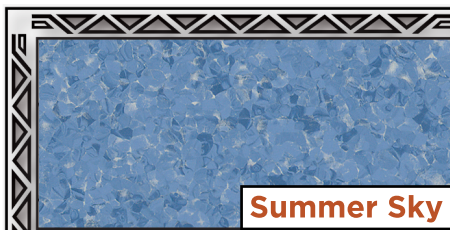
#### For more information contact:

StaticStop (a division of SelecTech, Inc.)  
33 Wales Ave, Unit F, Avon, MA. 02322  
Phone: (877) 738-4537  
E-mail: [info@staticstop.com](mailto:info@staticstop.com)  
Visit our ESD website at

## FreeStyle ESD PLUS Designer Series

### Static Control Floor Tiles

**FreeStyle ESD PLUS™ Designer Series** is a Free-Floating ESD Flooring System with a Patented Hidden Interlock PLUS a Polyurethane Finish for Exceptionally Easy Maintenance



**Don't see a color you like? Ask about our extensive custom color options.**  
Also available as a glue-down sheet.

### Interlocking Tabs Make Installation A Snap:

**FreeStyle ESD PLUS™ Designer Series** manufactured by StaticStop.com (the ESD Flooring Experts) is easy to install without the need for conductive adhesives or copper foil. **FreeStyle ESD PLUS™ Designer Series** has a state of the art polyurethane finish that provides best in class maintainability.

- ✓ No Adhesive or Copper Foil Required
- ✓ Interlocks Provide Tile-to-Tile Electrical Connection
- ✓ Install over Existing Floors
- ✓ Eliminate Downtime
- ✓ Polyurethane / Ceramic Finish for easy maintenance





## Warranty

**FreeStyle ESD PLUS™ Designer Series** is manufactured to provide a durable and long-lasting floor covering under a range of temperature and exposure conditions and is backed by a **Lifetime Electrical** and a 10-Year limited warranty against wear.

## Installation-Interlocking

**FreeStyle ESD PLUS™ Designer Series** is a 18.5" square (2.38 sq. 18.5 ft./tile) interlocking floor tile. A plastic deadhead hammer should be used for joining these products. Tiles can be cut using a vinyl-tile cutter, circular saw, jig saw, or other power saws. **FreeStyle ESD PLUS™ Designer Series** is a free-lay system and does not require the use of adhesives. **FreeStyle ESD PLUS™ Designer Series** may be installed over concrete, wood, asbestos tile, rubber, vinyl, composite tiles, and other standard floors. A 3/8" gap around the perimeter and along any other vertical surface should be left to allow for expansion and contraction. The floor must be grounded properly to ensure proper discharge of static charges. For more detailed instructions, consult the **FreeStyle ESD PLUS™ Designer Series** Installation Guide.

## Regular Maintenance

**FreeStyle ESD PLUS™ Designer Series** is easy to clean and maintain. The tiles should be cleaned with an ESD cleaner. We recommend our ProtectOhm cleaner for best results. The tiles can be cleaned by hand or using a mop or sponge. A power scrubber or buffer can also be used to clean particularly tough stains and soiling.

## Installation-Gluedown

**FreeStyle ESD PLUS™ Designer Series** is also available in top-sheet only for direct glue down using a conductive adhesive. For glue down installations, the surface must be properly prepared and free of moisture, dirt, oils, and other foreign materials to ensure a reliable bond with the adhesive. For specific and detailed instructions, please see our installation guidelines.

## Solvent/Stain Resistance

**FreeStyle ESD PLUS™ Designer Series** has been tested for solvent/stain resistance per ASTM F-925-96 against a number of fluids, such as oils, acids, solvents, and staining agent.

## Physical Properties

<b>Dimensions</b>	18.5" x 18.5"
<b>Thickness of Interlocking</b>	FS2: 0.375", FS4: 0.34"
<b>Dimensions of Glue Down</b>	Rolls: 78"W x 255"L x 2mm thick
<b>Effective Coverage</b>	2.38 sq. ft. per Interlocking Tile 55 sq. yd. per Glue-Down Roll
<b>Weight of Interlocking</b>	FS2: 6.5 lbs; FS4: 5.4 lbs
<b>Weight of Glue Down</b>	295 lbs/roll
<b>Reference Specification</b> ASTM F-1700	Conforms
<b>Critical Radiant Flux</b> ASTM E-648	> 1.0 W/cm <sup>2</sup> Meets Class I Fire Rating
<b>Smoke Density</b> ASTM E-662	≤ 450
<b>Chemical Resistance</b> ASTM F-925	Excellent resistance to Acids, Alkalis, Household Chemicals
<b>Recycled Content</b> (Interlocking Tile Only)	Minimum 20% Post-Industrial Materials

## Electrical Properties

	<b>FreeStyle DISSIPATIVE</b>
<b>Electrical Resistance</b> ESD S7.1 at 15% RH	10 <sup>6</sup> to 1.0 x 10 <sup>9</sup> Ohms
<b>Electrostatic Propensity*</b> ESD STM 97.2 at 15% RH AATCC-134 at 15% RH	<30 volts
<b>Static Decay Method 4046</b> at 15% RH	<0.02 seconds

**ESD S20.20:** Complies

**Grounding:** Concrete Floor: Every 1000 Sq. Ft.  
Access Floor: Every 3000 Sq. Ft.

\*All conductive flooring (regardless of composition or manufacturer) requires appropriate conductive footwear to achieve results in this range.

### For more information contact:

StaticStop (a division of SelecTech, Inc.)

33 Wales Ave, Unit F, Avon, MA. 02322

Phone: (877) 738-4537

E-mail: [info@staticstop.com](mailto:info@staticstop.com)

Visit our ESD website at: [www.StaticStop.com](http://www.StaticStop.com)

# SelectTile™ ESD

## Interlocking Static Control Floor Tiles

SelectTile™ ESD is the **WORLD'S FIRST** Modular, Static Control Flooring System Using Injection Molded Technology with Visible Interlocking Tabs

SelectTile™ ESD is easy to install without the need for conductive adhesive, copper foil strips, or underlayment.

### SelectTile™ ESD Offers

- Free-lay flooring concept
- Durability against high commercial traffic volumes
- High indent resistance to withstand heavy loads
- Comfort under foot
- 10 Year Commercial Warranty

SelectTile™ ESD is designed specifically for fork lift, pallet jack, heavy load equipment and server rack environments and is rugged, durable and versatile enough for a variety of installations such as:

### ESD Environments

- Electronics Manufacturing
- Pick & Place/Reflow/Wave Solder/SMT
- Hardware Repair Rooms
- Shipping/Receiving/Loading Docks
- Stock/Parts/Inventory Supply Rooms

### Mission Control

- Raised Access Floor Environments
- Central Apparatus/Master Control/Server Rooms
- Federal/State/Municipal Operation Centers
- Command - Control/Emergency Operation Centers
- Security Shelters and Guard Booths
- Airport Equipment and Test Repair Zones
- Tv/Radio Production Studios

### SelectTile™ ESD and LEED™

- Recyclable (Cradle-to-Cradle) Take Back Program



\* Transition Pieces  
\* Corner Pieces  
\* Grounding Kit  
\* Available Upon Request

Surface Textures:  
• Flat  
• Coin  
• Diamond Grid  
Available only in black

### Interlocking Tabs - No Adhesive or Copper Foil Required

SelectTile™ ESD is easily installed over problem subfloors including:

- Concrete with high moisture emissions
- Cracked and stained concrete
- Difficult to remove old flooring
- Minimal down-time, disruption or loss of productivity

Electrostatic Properties		
	SelectTile™ ESD CONDUCTIVE**	SelectTile™ ESD DISSIPATIVE
<b>Electrical Resistance</b> ESD S7.1 at 15% RH	2.5 x 10 <sup>4</sup> to 2 x 10 <sup>6</sup> Ohms	1 x 10 <sup>5</sup> to 1 x 10 <sup>9</sup> Ohms
<b>Electrostatic Propensity*</b> ESD STM 97.2 at 15% RH AATCC-134 at 15% RH	<10 volts	<30 volts
<b>Static Decay Method 4046</b> at 15% RH	<0.01 seconds	<0.02 seconds

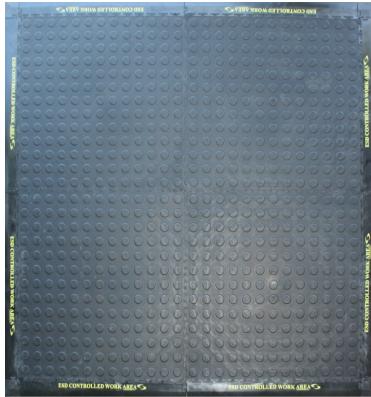
**ESD S20.20:** Complies

**Grounding:** Concrete Floor: Every 1000 Sq. Ft.  
Access Floor: Every 3000 Sq. Ft.

\*All conductive flooring (regardless of composition or manufacturer) requires appropriate conductive footwear to achieve results in this range.







**Conveniently Configured with Edging for Mats**

## Warranty

**SelecTile™ ESD** is manufactured to provide a durable and long-lasting floor covering under a range of conditions and is backed by a **Lifetime Electrical** and 10 year limited wear warranty. Ask your **SelecTile™ ESD** dealer for more details on our warranties.

## Installation

**SelecTile™ ESD** is a 23.75" x 23.75" (3.92 ft<sup>2</sup>/tile) interlocking floor tile available with a 24" x 2" interlocking transition strip and 2" x 2" corners. A plastic tipped mallet or deadhead hammer should be used for joining these products. Tiles can be cut using a utility knife, vinyl-tile cutter or jig saw. **SelecTile™ ESD** is a free-lay system and does not require the use of adhesives. **SelecTile™ ESD** may be installed over concrete, wood, asbestos tile, rubber, vinyl composite tiles, and other standard floors. A 3/8" gap around the perimeter and along any other vertical surface should be left to allow for expansion and contraction. The floor must be grounded properly to ensure proper discharge of static charges. For more detailed instructions, consult the **SelecTile™ ESD** Installation Guide.

## Regular Maintenance

**SelecTile™ ESD** is easy to clean and maintain. The tiles should be cleaned with an ESD cleaner such as ProtectOhm. The tiles can be cleaned by hand using a mop or sponge. A power scrubber or buffer can also be used to clean particularly tough stains and soiling.

## Architectural Specifications

All floors shown in the Finish Schedule or listed in this specification shall be **SelecTile™ ESD** Resilient Flooring, manufactured by SelecTech, Inc. Avon, MA. The product should have an electrical resistance of between  $2.5 \times 10^4$  and  $10^6$  Ohms for conductive flooring applications and  $10^6$  to  $10^9$  Ohms for static dissipative applications as measured pursuant to ANSI/ESD 7.1. The product shall be an interlocking floor tile and be available in 23.75" x 23.75" squares (nominal). The product shall offer a 10-Year Limited Warranty against wear as detailed in the **SelecTile™ ESD** Warranty brochure. The tiles shall be installed as a free-lay product without adhesives. Installation shall be as recommended in the **SelecTile™ ESD** Installation Guide.

## Product Specifications

<b>Dimensions</b>	24" x 24"
<b>Thickness</b>	0.22"
<b>Weight</b>	6 ± 0.1 lbs/tile
<b>Connection</b>	Interlocking Edges
<b>Abrasive Resistance</b> ASTM TABER METHOD 600 gram wheel - 1,000 cycles	<0.4 Grams weight loss
<b>Effective Coverage</b>	3.92 Ft <sup>2</sup> /Tile
<b>Reference Specification</b> ASTM F-1306	Exceeds Requirement
<b>Critical Radiant Flux</b> ASTM E-648	≥ 0.45 W/cm <sup>2</sup> Meets Class I Fire Rating
<b>Smoke Density</b> ASTM E-662	≤ 450
<b>Coefficient of Friction</b> ASTM D-2047 conforms to ADA specifications	0.7 - 0.8 (depending on surface)
<b>Recycled Content</b> (Interlocking Tile Only)	Minimum 20% Post-Industrial Materials

## Solvent/Stain Resistance

**SelecTile™ ESD** has been tested for solvent/stain resistance per ASTM F-925-96 against a number of fluids, such as oils, acids, solvents, and staining agent. The tiles showed no change (surface attack, color change, surface dulling) to the following:

	Surface Attack	Color Change	Surface Dulling
5% Acetic Acid	No Effect	No Effect	No Effect
Acetone	No Effect	No Effect	No Effect
28% Ammonia	No Effect	No Effect	No Effect
Animal Blood	No Effect	No Effect	No Effect
Carbon Tetrachloride	No Effect	No Effect	No Effect
Chloroform	No Effect	No Effect	No Effect
Cotton Seed Oil	No Effect	No Effect	No Effect
95% Ethyl Alcohol	No Effect	No Effect	No Effect
Ethyl Acetate	No Effect	No Effect	No Effect
37% Formaldehyde	No Effect	No Effect	No Effect
Gasoline	No Effect	No Effect	No Effect
30% Hydrogen Peroxide	No Effect	No Effect	No Effect
Methanol	No Effect	No Effect	No Effect
Mineral Oil	No Effect	No Effect	No Effect
0.5% Muriatic Acid	No Effect	No Effect	No Effect
50% Sodium Hydroxide	No Effect	No Effect	No Effect
98% Sulfuric Acid	No Effect	No Effect	No Effect
Tallow	No Effect	No Effect	No Effect
2% Tincture of Iodine	No Effect	No Effect	No Effect
Trichloroethylene	No Effect	No Effect	No Effect

### For more information contact:

StaticStop (a division of SelecTech, Inc.)

33 Wales Ave, Unit F, Avon, MA. 02322

Phone: (877) 738-4537 E-mail: [info@staticstop.com](mailto:info@staticstop.com)

Visit our ESD website at [www.StaticStop.com](http://www.StaticStop.com)

# FreeStyle™ CVT

## Direct Glue Down ESD Floor Tiles

**FreeStyle™ CVT** is a low-cost, reliable, and attractive alternative for your static-protection needs. This glue-down option is a perfect alternative to our **FreeStyle™ ESD** Interlocking floor when installing in open spaces, where downtime isn't a concern, and where subfloors are ready to accept glue-down flooring.



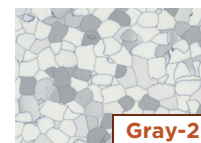
Off White-2



Steel Blue-2



Tan-2



Gray-2

**FreeStyle™ CVT** is a homogenous vinyl with conductive veins that run throughout the product, providing permanent and reliable conductivity that is guaranteed for the life of the product. Available in four standard colors, it will provide attractive, long-lasting static-protection for your work environment.

## FreeStyle™ CVT is Versatile Enough for a Variety of Applications:

- Electronic Manufacturing & Assembly
- Telecommunications Equipment Rooms
- Explosives - Flammable Zones
- Component Device Handling Areas
- Research & Development Test Labs
- Storage - Parts - Inventory Rooms



**FreeStyle™ CVT** being installed in a server room, using trowel-on, 1-part, conductive adhesive.



**FreeStyle™ CVT** provides industry-leading static protection in this server room application.

*(Can also be installed with our new sprayable, conductive adhesive.)*



## Warranty

**FreeStyle™ CVT** is manufactured to provide a durable and long-lasting floor covering and is backed by a **Lifetime Electrical** and 10 year limited wear warranty. Ask your **FreeStyle™ CVT** dealer for more details on our warranties.

## Installation

Our **FreeStyle™ CVT** direct glue-down solution installs with either our StaticStop 1-part conductive adhesive or our new conductive spray on adhesive.

## Regular Maintenance

**FreeStyle™ CVT** is easy to clean and maintain. The tiles should be cleaned with an ESD cleaner such as ProtectOhm. The tiles can be cleaned by hand using a mop or sponge. A power scrubber or buffer can also be used to clean particularly tough stains and soiling.

## Architectural Specifications

All floors shown in the Finish Schedule or listed in this specification shall be **FreeStyle™ CVT** Resilient Flooring, manufactured by SelecTech, Inc. Avon, MA.

The product should have an electrical resistance of between  $2.5 \times 10^4$  and  $10^6$  Ohms as measured pursuant to ANSI/ESD 7.1.

The product shall be available in 18.5" x 18.5" squares (nominal) and with a thickness of 2mm. The tiles shall be installed with conductive adhesives.

The product shall offer a 10-Year Limited Warranty against wear as detailed in the **FreeStyle™ CVT** Warranty brochure. Installation shall be recommended in the **FreeStyle™ CVT** Installation Guide.

## Solvent/Stain Resistance

**FreeStyle™ CVT** has been tested for solvent/stain resistance per ASTM F-925-96 against a number of fluids, such as oils, acids, solvents, and staining agents.

## Physical Properties

<b>Dimensions</b>	18.5" x 18.5"
<b>Thickness of Interlocking</b>	2mm
<b>Effective Coverage</b>	2.38 square feet per tile
<b>Weight</b>	1.8 lbs per tile
<b>Critical Radiant Flux</b> ASTM E-648	> 1.0 W/cm <sup>2</sup> Meets Class I Fire Rating
<b>Smoke Density</b> ASTM E-662	≤ 450

## Electrical Properties

	<b>FreeStyle™ CVT</b>
<b>Electrical Resistance</b> ESD S7.1 at 15% RH	$2.5 \times 10^4$ to $1.0 \times 10^6$ Ohms
<b>Electrostatic Propensity*</b> ESD STM 97.2 at 15% RH AATCC-134 at 15% RH	<30 volts
<b>Static Decay Method 4046</b> at 15% RH	<0.02 seconds
<b>ESD S20.20</b>	Complies

**Grounding:** Every 1000 Sq. Ft.

\*All conductive flooring (regardless of composition or manufacturer) requires appropriate conductive footwear to achieve results in this range.

## Contact Us For More Information:

StaticStop (a division of SelecTech, Inc.)  
33 Wales Ave, Unit F, Avon, MA. 02322  
Phone: (877) 738-4537  
E-mail: [info@staticstop.com](mailto:info@staticstop.com)  
Visit our ESD website at [www.StaticStop.com](http://www.StaticStop.com)

# EpoxyStyle™ ESD

**Durable, Easy-to-Appl**y ESD Epoxy Floor Finish

**EpoxyStyle™ ESD** is a Tough, 2-Part Epoxy Floor Finish For Industrial Environments Requiring ESD Protection

**EpoxyStyle™ ESD** is a Water-Based, 2-Part Epoxy-Acrylate Finish designed for industrial areas such as shipping and receiving areas, warehouses, high-traffic aisles, and production floors. It is a great alternative to our interlocking and glue-down flooring, a perfect solution for your other open area environments where downtime is not critical and the subfloor is in good enough of a condition to accept a finish.

#### Key Benefits Include:

- Low-Cost Finish for Areas Requiring Guaranteed Static Protection
- < 1 Meg-Ohm Resistance; <25 Volt Generation
- Install Over Old VCT and Concrete
- Excellent Adhesion Characteristics
- Easy Application
- Low Odor
- Excellent Chemical and Abrasion Resistance
- Superior Toughness and Durability

#### EpoxyStyle™ ESD Is Recommended For The Following Areas:

- Electronics Manufacturing Areas
- Sensitive Product Storage Areas
- Transport Aisles
- Shipping and Receiving Areas
- Test Areas
- Server Rooms/Data Closets
- Test Labs

**EpoxyStyle™ ESD** is easy to apply using standard rollers. It applies in 2 to 3 coats and can be used for light traffic within 12 hours of application.

**EpoxyStyle™ ESD** provides a uniform, matte finish. The final gloss can be enhanced by finishing with our DuraShield™ ESD finish.



**EpoxyStat ESD™ with DuraShield ESD™ Finish**



**Charcoal**

**Pewter**

**Beige**

**Blue**

# EpoxyStyle™ ESD

Durable, Easy-to-Apply ESD Epoxy Floor Finish

## Product Specifications

<b>Gloss</b>	Satin/Matte Finish
<b>Nonvolatile Solids</b>	35 ± 1%
<b>Viscosity</b>	400-600 CPS
<b>pH</b>	6±0.5
<b>Weight/Gallon</b>	9.1 lbs
<b>Flash Point</b>	>212° F
<b>Resistivity</b> ASTM D257	Medium & Light Gray <10 <sup>6</sup> Ohms
<b>Meets ESD S20.20</b>	Beige <10 <sup>9</sup> Ohms @ 40% Relative Humidity
<b>Static Decay Time</b> FTMS 101B Method 404	0.1 Second
<b>Static Generation</b> ESD STM 97.2	Post-Industrial Materials
<b>Static Load</b> DIN 16961.2	>2500 psi
<b>Abrasion Resistance</b> ASTM D-1044	<b>SC-10-F Wheel</b> 550g wt, 10,000 cycles 1.6% guage loss
<b>Slip Resistance</b> ASTM F-609	0.5 minimum
<b>Freeze/Thaw Stability</b>	Do Not Freeze
<b>Drying Time</b>	Dry To Touch 5-7 Hours Open to Traffic 10-12 Hours
<b>Gallon Coverage</b>	450-600 ft <sup>2</sup>
<b>Film Thickness</b> @ 450 ft <sup>2</sup> /gallon	3 mil wet; 1.1 mil dry
<b>VOC Content</b>	≤350 grams/liter

Complies with Ozone Transport Commission and CA VOC regulations.

## Safety Information

<b>Health</b>	1
<b>Flammability</b>	0
<b>Reactivity</b>	0
<b>Personal Protection</b>	B

**WARNING:** Combustible. Harmful if Swallowed. Contains 2-Butoxyethanol CAS# 111-76-2, Acetone CAS# 67-64-1, and Glycol Ether EP CAS# 2807-30-9. Provide adequate ventilation. Prolonged exposure may cause dizziness. If dizziness occurs, seek fresh air. Use respiration equipment if needed.

If ingested, induce vomiting with oil of ipecac. For contact with skin or eyes, flush with plenty of water. Consult with a physician.

For detailed information, consult MSDS sheet.



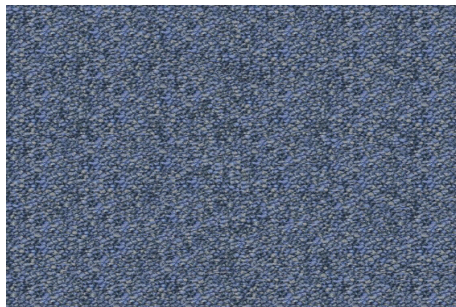
5-Gallon kit includes 5-gallon bucket and 2 pints of catalyst. Each 5-Gallon kit covers up to 2,250 to 3,000 square feet per coat. A minimum of two coats is recommended.



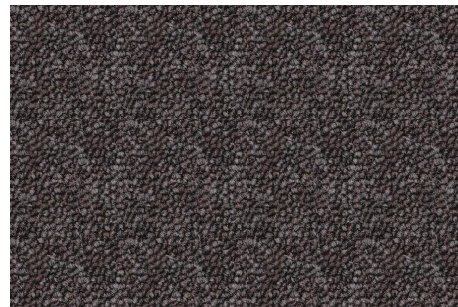
# OhmStyleII™ ESD

## ESD Modular Carpet Tiles

ELECTRONICS MANUFACTURING • MISSION CONTROL • ACCESS FLOORS • NETWORKED OFFICES



Blue Denim-2



Charcoal Gray



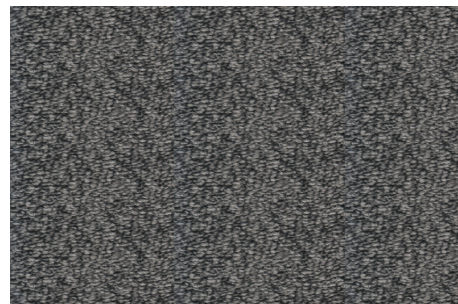
Earthtone



Copper-2



Gray Taupe





Lancaster Gray





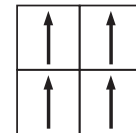
## Permanent Static Protection

<b>Conductive Fiber</b>	Continuous conductive monofilament
<b>Electrostatic Propensity</b>	ESD STM 97.2 < 20 Volts <i>*with conductive footwear</i> AATCC 134-06 <0.4 kV (400 Volts) <i>*without conductive footwear</i>
<b>Electrical Resistance</b>  ESD S20.20 Compliant	ESD S7.1/NFPA 99 Resistive/resistance characterization of materials: $R_{TT}$ six or more readings between points placed 3 feet apart. Tested with an applied voltage of 100V. Measured in Ohms, $2.5 \times 10^4$ minimum, $1.0 \times 10^7$ maximum. $R_{TG}$ six or more readings from surface to groundable point. Tested with an applied voltage of 100V. Measured in Ohms, $2.5 \times 10^4$ minimum, $1.0 \times 10^7$ maximum.  D.O.D HDBK263A, Section 40.1.2: Meets recommended guidelines for sensitive ESD devices, Class 1.  Exceeds FAA-STD-019e, Motorola R56 and ATIS-0600321.2010 guidelines for static control flooring.  Roller Caster Electrical Test (CET) Assessment. After 100,000 chair caster cycles there was no depreciable change in conductivity or electrical performance. Lab data available on request.
<b>Groundable Path</b>	StaticStop™ ground strip
<b>Grounding Frequency</b>	1 per 1,000 sq. ft.
<b>Backing System</b> 	<b>Conductive Ecoworx® backing: 100% PVC-free, phthalate-free, recyclable and made from recycled material.</b>
<b>Adhesives</b>	Conductive releasable adhesive for carpet tile $1.0 \times 10^6$ Ohms $R_{TT}$
<b>Sustainability</b> 	Platinum Certification under NSF/ANSI Standard 140-2010

## Properties

<b>Construction</b>	Textured Loop
<b>Yarn Weight</b>	24 oz./sq.yd. (813.76 g/sm)
<b>Total Weight</b>	95 oz./sq.yd.
<b>Stitches per Inch</b>	10/in.
<b>Average Density</b>	7,579 oz./yd. <sup>3</sup>
<b>Average Pile Height</b>	0.114" (2.9 mm)
<b>Gauge</b>	1/10 (39.37/10 cm)
<b>Fiber</b>	Premium Branded Solutions Dyed ECO Solution Q Nylon
<b>Tile Size</b>	24" x 24" (60.96 cm x 60.96 cm)
<b>Availability</b>	Standard Colors No Minimum <small>*Special Order Color Minimums Apply</small>
<b>Flamability</b>	ASTM E-648 Flooring Radiant Panel- Class 1 ( $\geq 45$ W/cm <sup>2</sup> ) ASTM E-662 NBS Smoke Density - less than 450
<b>Warranty</b>	Ltd. Lifetime Commercial Warranty

## Installation



monolithic

## Contact Us For More Information:

StaticStop (a division of SelecTech, Inc.)  
33 Wales Ave, Unit F, Avon, MA. 02322  
Phone: (877) 738-4537  
E-mail: [info@staticstop.com](mailto:info@staticstop.com)  
Visit our ESD website at [www.StaticStop.com](http://www.StaticStop.com)



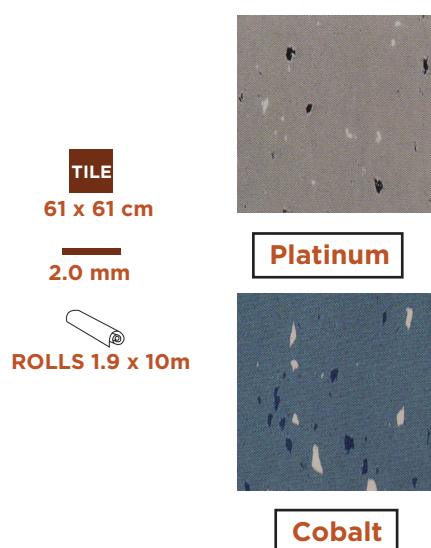
**\*Ecoworx is a registered trademark of Shaw, a Berkshire Hathaway Company.**

**\*\*This information is accurate and current but may be subject to change without notice.**

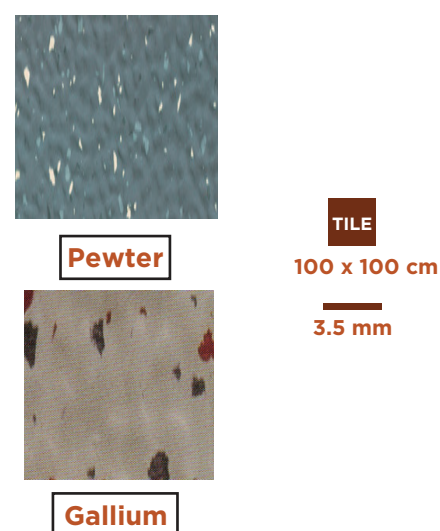
# LowVolt™ Rubber

High Performance PVC-Free ESD Rubber Flooring

## 2 mm Options



## 3.5 mm Options



**LowVolt™ Rubber** Provides a high level of protection against the damage of electro-static build up and electric-static discharge (ESD) in environments where the attention to this problem is of primary importance.

### Applications Include:

- Electronic manufacturing plants
- Test labs
- Data processing areas
- Control rooms
- Communication centers
- Electronic diagnostic units in hospitals
- Complies with ESD S20.20
- LIFETIME DISSIPATION WARRANTY
- Very resilient for anti-fatigue
- Easy to maintain (conductive wax not necessary)
- Very high abrasion resistance
- Sound absorbent and slip resistant
- Resistant to oils, grease, and chemicals





## Warranty

**LowVolt™ Rubber** is manufactured to provide a durable and long-lasting floor under a range of temperature and exposure conditions and is backed by a 10-Year limited warranty against wear. Ask your **LowVolt™ Rubber** dealer for more details on this Limited 10-Year Warranty.

## Installation

The subfloor must be flat level, smooth, rigid, indeformable, thoroughly dry as well as damp-proof and must offer good support. It must be clean and free of any foreign material. These subfloor characteristics must be permanent. Before installing the products, the subfloor must be checked to detect moisture using an adequate moisture test. Installation must be carried out by skilled labor. To assure color uniformity, all tiles and rolls should have the same batch number as indicated on the packaging. Always dry lay the tiles and rolls prior to cutting and adhering them to detect for any defect in the product and/or in the installation. Always use Portland cement based patching/leveling compounds (never use gypsum based compounds). Remove any dirt and/or foreign material from subfloor which may reduce the adhesion. Our adhesives or other approved adhesives should be used for the installation. Rubber flooring and subfloor must have the same temperature, never below 15° C. Light foot traffic is allowed 24 hours after installation. Do not perform any cleaning on the floor within the first 24 hours of installation. Spills of adhesive must be removed immediately, prior to the curing of adhesive.

## Regular Maintenance

**LowVolt™ Rubber** is easy to clean and maintain. The flooring should be cleaned an ESD cleaner such as Protect Ohm. The flooring can be cleaned by hand using a mop or sponge. A power scrubber or buffer can also be used to clean particularly tough stains and soiling. As for any other floor covering, for longevity, good appearance, and easy maintenance, rubber flooring should be cleaned and maintained periodically. The frequency with which the maintenance operations should be carried out depends on the amount of traffic. Please refer to our Technical Manual for specific information.

## Composition

**LowVolt™ Rubber** Flooring Products are made of 100% synthetic virgin rubber (SBR - Styrene Butadiene Rubber), the finest quality materials, organic stabilizing agents, vulcanizing agents, antioxidants and quality pigments. They do not contain re-ground rubber, coarse mineral aggregates, sand or any fiber or material known to pose health hazards in any of the phases of manufacturing and use cycle.

### For more information contact:

StaticStop (a division of SelecTech, Inc.)

33 Wales Ave, Unit F, Avon, MA. 02322

Phone: (877) 738-4537

E-mail: info@staticstop.com

Visit our ESD website at [www.StaticStop.com](http://www.StaticStop.com)

LIMITED WEAR WARRANTY: 10 YR		SUMMARY (FLOORING PRODUCTS)		
Properties		Standard of Reference	Results	Units of Measure & Requirements
Safety & Environment	California Air Quality Standard	1350	Compliance	VOC's Emission/ ppm
	Halogen Free		Yes	
	Asbestos Free		Yes	
	PVC Free		Yes	
	Formaldehyde Free		Yes	
	Heavy Metals Free		Yes	
	Very Low VOC's		Yes	
	DOP's Free		Yes	
Fire & Smoke Behavior	Flamability	ASTM E-648	>0.50 • Class 1	watts/cm <sup>2</sup>
	Fire Behavior	DIN 4102	B1	Rating
	Smoke Density	ASTM E-662	<450	DMC
	Toxicity of Smoke	BSS 7239	Compliance	ppm
Mechanical Features	Slip Resistant	ASTM D-2047	≥ 0.6	Coefficient
	Hardness	ASTM D-2240 ISO 7619	85 (plus or minus 5)	Shore A
	Dimension Stability	DIN 51962 ASTM D-1204	Plus or minus 0.3 no noticable variation	%
	Residual Indentation	ASTM F-36	<0.15	mm
	Abrasion Resistance	DIN 53516 ISO 4649 ASTM D-3309 (Taber Test)	≤ 180 ≤ 0.5	mm <sup>3</sup> A Ø 20 mm
	Flexibility	EN 435	No Fissuring	Complies
	Resistance to Elements over Time	ASTM D-471 DIN 535476	<1% (nonpourous)	%
Resistance to Elements over Time	Color Stability (Xenotest) (to artificial light)	ASTM 2526 DIN 53389	≥ #6 Blue Scale	Degree
	Resistance to Chemicals	DIN 51958	Good	Refer to Chart
	Cigarette Burn Resistance	DIN 51961	Yes	Visual Judgement
	Acoustical Features	Acoustical Insulation (Noise Reduction to Treading)	DIN 52210	8-18 dB Decibles
Electrical Features	Static Generation (from treading)	DIN 54345	≤2.0 (antistatic)	kV
	Decay Time	NFPA 99 EN 100015	<0.2	sec.
Static Control ESD Features	Resistance Point to Point	EN 100015-1 NFPA 99 ESD 20.20	10 <sup>-6</sup> - 10 <sup>-9</sup>	Ω (olms)
	Resistance to Ground	EN 100015-1 NFPA 99 ESD 20.20		

# Maintenance Products

Your ESD flooring is not just any flooring product, but a functioning, technical component of your static-sensitive work environment. Using the wrong maintenance products on your floor can render it ineffective. Protect your investment by using **StaticStop's ESD Maintenance Products**, designed specifically for ESD flooring.

## CleanStrip ESD™ High Performance Floor Stripper

Residues from detergents, dirt, and floor finishes can quickly reduce the performance of any ESD Flooring. **CleanStrip ESD™** is designed to effectively dissolve and remove these residues to keep your floor performing at its peak. It is formulated from top quality water-miscible solvents and contains less than 1% solids at concentration, so it leaves no residue. Old build-up can be easily removed using **CleanStrip ESD™** and an auto-scrubber with a standard stripping pad.

## ProtectOHM ESD™ Floor Cleaner

When cleaning your ESD flooring, it is critical to leave no residue behind that will reduce its conductive performance. Conventional floor detergents were not designed for ESD flooring and can leave such residues to render an ESD floor ineffective. **ProtectOHM ESD™** is a floor cleaner specifically designed as a low-residue detergent that will get your floor clean with minimal residue. Better still, **ProtectOHM ESD™** has a built-in conductive additive that will combine with the conductive elements in your floor to enhance its performance. **ProtectOHM ESD™** can be used on both ESD hard-surface as well as ESD carpet flooring products and is the onestop solution to all of your ESD floor cleaning requirements. Environmentally safe, it is non-corrosive, nonflammable, and biodegradable.

## DuraShield ESD™ Floor Finish

All homogenous vinyl, ESD floor tiles have a relatively soft make-up and can be scratched and scuffed if subjected to high-traffic and black shoe soles. In these demanding environments, sealing your ESD vinyl floor can help to reduce maintenance requirements and keep the floor looking better, longer. Standard floor finishes, however, can't be used because they'll mask the conductive properties of the ESD floor and render it ineffective. **DuraShield ESD™** has a conductive additive that bonds with the ESD vinyl and works in conjunction with your ESD floor. So, it will enhance the maintenance of your floor and protect its conductive properties.

## DuraBuff ESD™ Floor Gloss Maintainer

This innovative spray buff is formulated as a companion product for **DuraShield ESD™**. An integral component of the conductive maintenance program, **DuraBuff ESD™** is designed to extend the static dissipating qualities of **DuraShield ESD™**, as well as restore the gloss and enhance the appearance of conductive flooring surfaces. Its inherent static dissipating properties make **DuraBuff ESD™** ideal for application in computer rooms, electronic assembly areas, telephone substations, and any other area where positive elimination of static electricity is a prime consideration. Incorporation of **DuraBuff ESD™** into a static-control flooring maintenance program will extend the period of time between stripping and recoating procedures and result in saving labor and money.

**For more information contact:** StaticStop (a division of SelecTech, Inc.)

33 Wales Ave, Unit F, Avon, MA. 02322

Phone: (877) 738-4537

E-mail: [info@staticstop.com](mailto:info@staticstop.com)

Visit our ESD website at [www.StaticStop.com](http://www.StaticStop.com)



# Maintenance Products

## CLEANING AND MAINTENANCE GUIDELINES FOR FREESTYLE FLOORING PRODUCTS

SELECTECH ESD FLOOR MAINTENANCE PRODUCTS AND USES					
Product	Use	Dilution Range	Estimated Use	Packaging Options	Coverage /sq.ft
<b>ProtectOHM ESD™</b>	Specialized low residue floor cleaner that includes a conductive additive to enhance ESD performance. Use for regularly scheduled washing.	6 -8 oz solution/ 1 gallon water (1:16)	<b>Damp Mopping</b> 1 gallon diluted solution/1,000 sq. ft.	1 Quart 1 Gallon 5 Gallon Pail 55 - Gallon	4,000 16,000 80,000 880,000
<b>DuraShield ESD™</b>	Clear finish coat that seals and creates hardened surface reducing regular maintenance and keeping floor looking better, longer. Use periodically.	none	1 gallon covers 1,750 sq./coat	1 Quart 1 Gallon 5 Gallon Pail 55 - Gallon	450 1,750 8,750 96,250
<b>DuraBuff ESD™</b>	Companion product to DuraShield to maintain gloss. Use periodically to enhance finish and extend time between stripping and recoating.	none	1 gallon covers 4,000 sq./coat	1 Quart 1 Gallon 5 Gallon Pail 55 - Gallon	1,000 4,000 20,000 220,000
<b>CleanStrip ESD™</b>	Strips built up detergents, dirt and floor finishes. Use periodically.	6 -8 oz solution/ 1 gallon water (1:16)	1 gallon diluted solution/300 sq. ft.	1 Quart 1 Gallon 5 Gallon Pail 55 - Gallon	1,500 6,000 24,000 264,000
<b>Notes:</b>	<i>Dilution range and estimated coverages may be adjusted depending on the condition of the floor. Suggested coverages are for guidance purposes only.</i>				

**For more information contact:** StaticStop (a division of SelecTech, Inc.)

33 Wales Ave, Unit F, Avon, MA. 02322

Phone: (877) 738-4537

E-mail: [info@staticstop.com](mailto:info@staticstop.com)

Visit our ESD website at [www.StaticStop.com](http://www.StaticStop.com)



# StaticStop

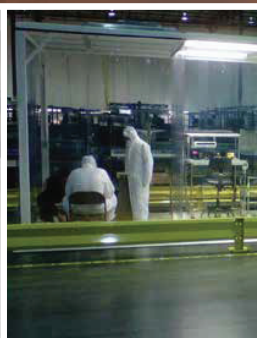
by  
SelecTech



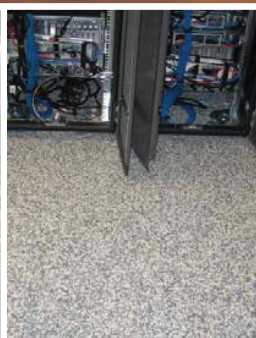
A complete line of ESD Static Control Flooring solutions for any static-sensitive area. All products are ANSI ESD S20.20 compliant. Available in dissipative, conductive, and military grades.



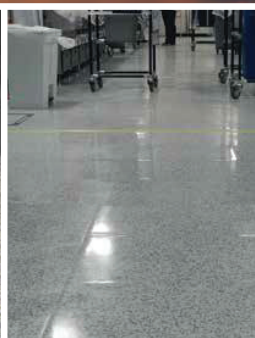
FreeStyle ESD Interlocking Tile in a 35,000 sq. ft.  
Electronics Assembly Operation



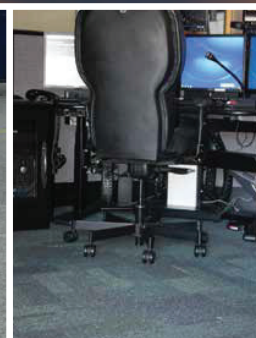
Industrial  
Explosives  
Clean Room



Server Rooms  
Data Centers  
Telecom



Electronics Manufacturing  
Sub-Assembly  
Test Labs  
Electronics Repair



Networked Offices  
911 Dispatch Centers  
Control Tower  
Call Centers  
Access Floors

## About StaticStop

Our team of experts has been involved with static control flooring since 1981 and has built a solid reputation within the Static Control Flooring Industry. Static Stop, headquartered in MA, is recognized by the A&D Community and the Fortune 1000 companies as one of the leading ESD flooring manufacturers in the United States. Our diverse team of employees includes Scientists, Sales Representatives, Engineers, Marketing, Business Development, Manufacturing, Finance, Shipping/Warehousing and Customer Service professionals, all very passionate about being in this business!

**StaticStop** manufactures the **#1 rated interlocking flooring product** in the U.S. **FreeStyle ESD** is the **FIRST** and **ONLY** interlocking vinyl floor tile utilizing recycled materials and a patented "hidden zipper-lock" connection that is still uncontested by the competition.

**For additional information** and free samples on all of our ESD Flooring product solutions, please call our team of ESD-SMEs (Subject Master Experts).