

SelectTile ESD™

Interlocking Static Control Floor Tiles

SelectTile ESD™, manufactured by StaticStop, is available in Static Dissipative or Conductive Meg-Ohm ratings and is easy to install without the need for conductive adhesive, copper foil strips, or underlayment.

SelectTile ESD™ is designed specifically for fork lift, pallet jack, heavy load equipment, and server rack environments, and is rugged, durable, and versatile enough for a variety of installations.

SelectTile ESD™ Offers

- Free-lay flooring concept
- Durability for high commercial traffic volumes
- High indent resistance to withstand heavy loads
- Comfort under foot
- 10 year Commercial Warranty
- Lifetime Electrical Warranty

ESD Environments

- Electronics Manufacturing
- Pick & Place / Reflow / Wave Solder / SMT
- Hardware Repair Rooms
- Shipping / Receiving / Loading Docks
- Stock / Parts / Inventory Supply Rooms

Mission Control

- Raised Access Floor Environments
- Central Apparatus / Master Control / Server Rooms
- Federal / State / Municipal Operations Centers
- Command - Control / Emergency Operation Centers
- Security Shelters and Guard Booths
- Airports Equipment and Test Repair Zones
- TV / Radio Production Studios

SelectTile ESD™ and LEED™

- Minimum 20% Recycled Content
- 100% Recyclable
- Take Back Program



Interlocking Tabs
No Adhesives or Copper Foil Required



Available Colors



Black Grey Blue Red Green Brown

SelectTile ESD™ is easily installed over problem subfloors including:

- Concrete with high moisture emissions
- Cracked and stained concrete
- Difficult to remove old flooring
- Minimal down-time, disruption, or loss of productivity

Electrostatic Properties

	SelectTile ESD™ CONDUCTIVE**	SelectTile ESD™ DISSIPATIVE
Electrical Resistance ESD STM 7.1 at 12% and 50% RH	< 1.0 x 10 ⁶ Ohms	1 x 10 ⁶ to 1 x 10 ⁹ Ohms
Electrostatic Propensity* ESD STM 97.2 at 12% RH	< 20 volts	< 50 volts

ESD S 20.20: Complies

Grounding: Concrete Floor: Every 1000 Sq. Ft.
Access Floor: Every 3000 Sq. Ft.

*All conductive flooring (regardless of composition or manufacturer) requires appropriate conductive footwear to achieve results in this range.



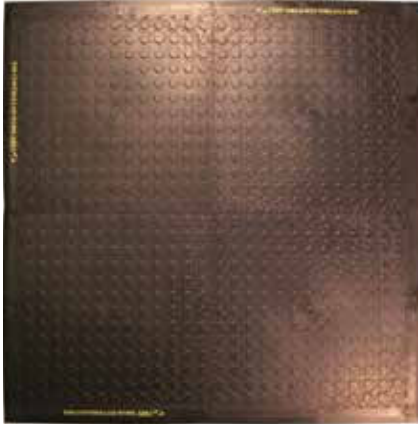
Conductive



Connected



Grounded



Conveniently Configured with Edging for Mats

Limited 10-Year Warranty

SelecTile ESD™ is manufactured to provide a durable and long-lasting floor covering under a range of temperature and exposure conditions. It is backed by a Lifetime Electrical and 10-Year limited warranty against wear. See our **Manufacturer's Limited Warranty for Modular Floor Tiles** for more detailed information.

Installation

SelecTile ESD™ is a 23.75" x 23.75" (3.92 ft²/tile) interlocking floor tile available with a 24" x 2" interlocking transition strip and 2" x 2" corners. A deadblow hammer should be used for joining these products. Tiles can be cut using a utility knife, vinyl-tile cutter, or jig saw. **SelecTile ESD™** is a free-lay system and does not require the use of adhesives. **SelecTile ESD™** may be installed over concrete, wood, asbestos tile, rubber, vinyl composite tiles, and other standard floors. A 3/8" gap around the perimeter should be left to allow for expansion and contraction. The floor must be grounded properly to ensure proper discharge of static charges. For more detailed instructions, consult the **SelecTile™ Commercial and ESD Installation Guide**.

Regular Maintenance

SelecTile ESD™ is easy to clean and maintain. The tiles should be cleaned with ammonia and water or other acceptable cleansers. The tiles can be cleaned by hand, using a mop or sponge. A power scrubber or buffer can also be used to clean particularly tough stains and soiling.

Architectural Specifications

All floors shown in the Finish Schedule or listed in this specification shall be **SelecTile ESD™ Resilient Flooring**, manufactured by SelecTech, Inc. Avon, MA. The product should comply with ANSI ESD S 20.20 and have an electrical resistance of between 2.5×10^4 and 1×10^6 Ohms for conductive flooring applications and 1×10^6 to 1.0×10^9 Ohms for static dissipative applications as measured pursuant to ANSI/ESD 7.1. The product shall be an interlocking floor tile and be available in 23.75" x 23.75" squares (nominal). The product shall offer a 10 year limited warranty against wear as detailed in the **Manufacturer's Limited Warranty of Modular Floor Tiles**. The tiles will be installed as a free-lay product without adhesives. Installation shall be as recommended in the **SelecTile™ Commercial and ESD Installation Guide**.

Product Specifications

Dimensions	24" x 24"
Thickness	0.22"
Weight	6 ± 0.1 lbs / tile
Connection	Interlocking Edges
Abrasive Resistance ASTM TABER METHOD 600 gram wheel - 1,000 cycles	< 0.4 grams weight loss
Effective Coverage	3.92ft ² / tile
Reference Specification ASTM F-1306	Exceeds Requirement
Critical Radiant Flux ASTM E-648	≥ 0.45 W/cm ² Meets Class I Fire Rating
Smoke Density ASTM E-662	≤ 450
Coefficient of Friction ASTM D-2047 conforms to ADA specifications	0.7 - 0.8 (depending on surface)
Recycled Content	Minimum 20% Post-Industrial Materials

Solvent/Stain Resistance

SelecTile ESD™ has been tested for solvent/stain resistance per ASTM F-925-96 against a number of fluids, such as oils, acids, solvents, and staining agent. The tiles showed no change (surface attack, color change, & surface dulling) to the following:

Fluid Substances	Surface Attack	Color Change	Surface Dulling
5% Acetic Acid	No Effect	No Effect	No Effect
Acetone	No Effect	No Effect	No Effect
28% Ammonia	No Effect	No Effect	No Effect
Animal Blood	No Effect	No Effect	No Effect
Carbon Tetrachloride	No Effect	No Effect	No Effect
Chloroform	No Effect	No Effect	No Effect
Cotton Seed Oil	No Effect	No Effect	No Effect
95% Ethyl Alcohol	No Effect	No Effect	No Effect
Ethyl Acetate	No Effect	No Effect	No Effect
37% Formaldehyde	No Effect	No Effect	No Effect
Gasoline	No Effect	No Effect	No Effect
30% Hydrogen Peroxide	No Effect	No Effect	No Effect
Methanol	No Effect	No Effect	No Effect
Mineral Oil	No Effect	No Effect	No Effect
0.5% Muriatic Acid	No Effect	No Effect	No Effect
50% Sodium Hydroxide	No Effect	No Effect	No Effect
98% Sulfuric Acid	No Effect	No Effect	No Effect
Tallow	No Effect	No Effect	No Effect
2% Tincture of Iodine	No Effect	No Effect	No Effect
Trichloroethylene	No Effect	No Effect	No Effect

For more information contact:

StaticStop (a division of SelecTech, Inc.)
33 Wales Ave, Unit F, Avon, MA. 02322

Phone: (877) 738 - 4537

E-mail: info@staticstop.com

Visit our ESD website at: www.StaticStop.com